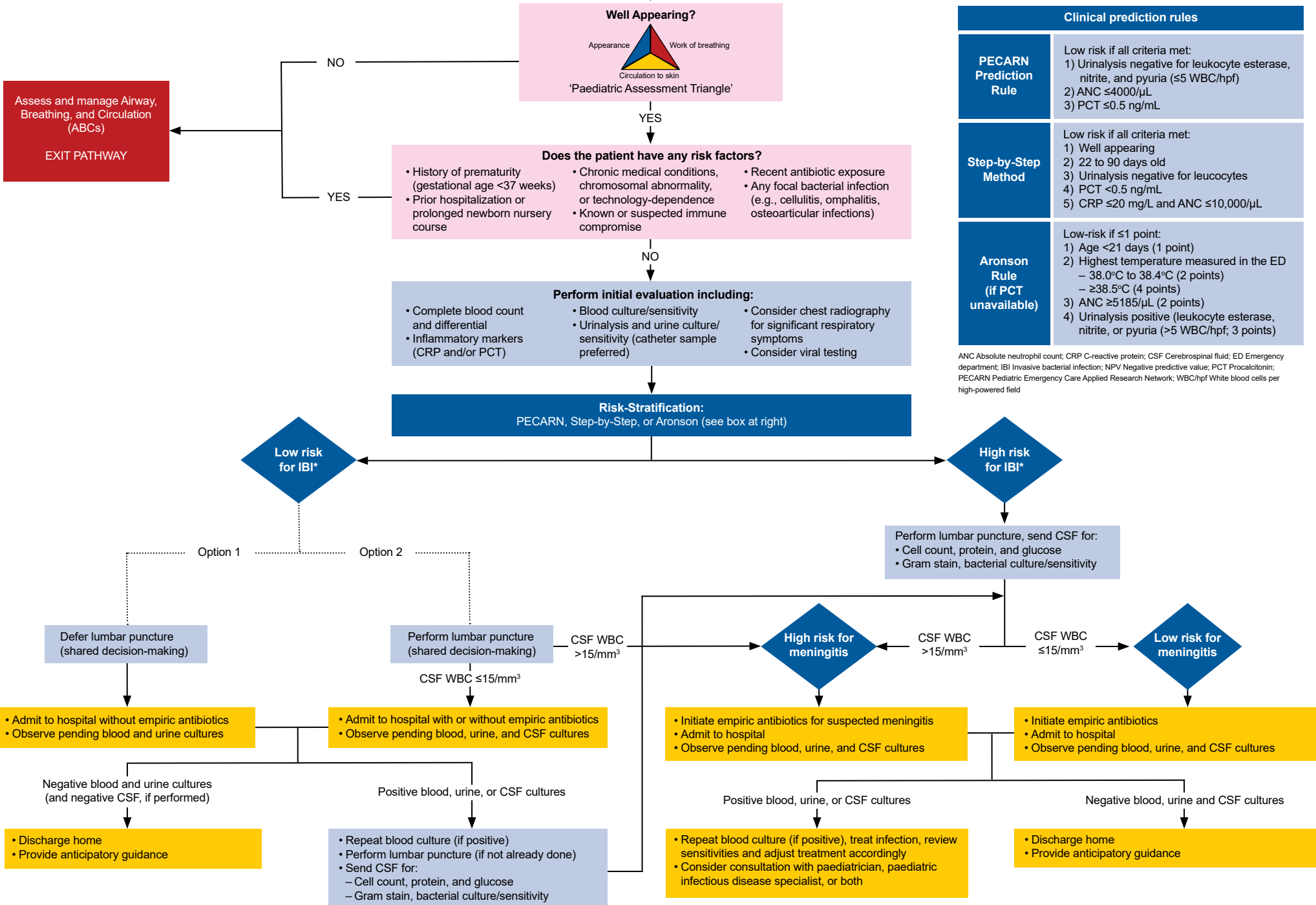


Infant aged 0 to 28 days with a documented rectal temperature $\geq 38^{\circ}\text{C}$



Clinical prediction rules	
PECARN Prediction Rule	Low risk if all criteria met: 1) Urinalysis negative for leukocyte esterase, nitrite, and pyuria (≤ 5 WBC/hpf) 2) ANC $\leq 4000/\mu\text{L}$ 3) PCT ≤ 0.5 ng/mL
Step-by-Step Method	Low risk if all criteria met: 1) Well appearing 2) 22 to 90 days old 3) Urinalysis negative for leucocytes 4) PCT < 0.5 ng/mL 5) CRP ≤ 20 mg/L and ANC $\leq 10,000/\mu\text{L}$
Aronson Rule (if PCT unavailable)	Low-risk if ≤ 1 point: 1) Age < 21 days (1 point) 2) Highest temperature measured in the ED – 38.0°C to 38.4°C (2 points) – $\geq 38.5^{\circ}\text{C}$ (4 points) 3) ANC $\geq 5185/\mu\text{L}$ (2 points) 4) Urinalysis positive (leukocyte esterase, nitrite, or pyuria (> 5 WBC/hpf; 3 points)

ANC Absolute neutrophil count; CRP C-reactive protein; CSF Cerebrospinal fluid; ED Emergency department; IBI Invasive bacterial infection; NPV Negative predictive value; PCT Procalcitonin; PECARN Pediatric Emergency Care Applied Research Network; WBC/hpf White blood cells per high-powered field

Figure 1. Management of infants aged 0 to 28 days with a documented rectal temperature $\geq 38^{\circ}\text{C}$
© Canadian Paediatric Society. Source: Management of well-appearing febrile young infants aged ≤ 90 days, Acute Care Committee, October 12, 2023. Available at www.cps.ca