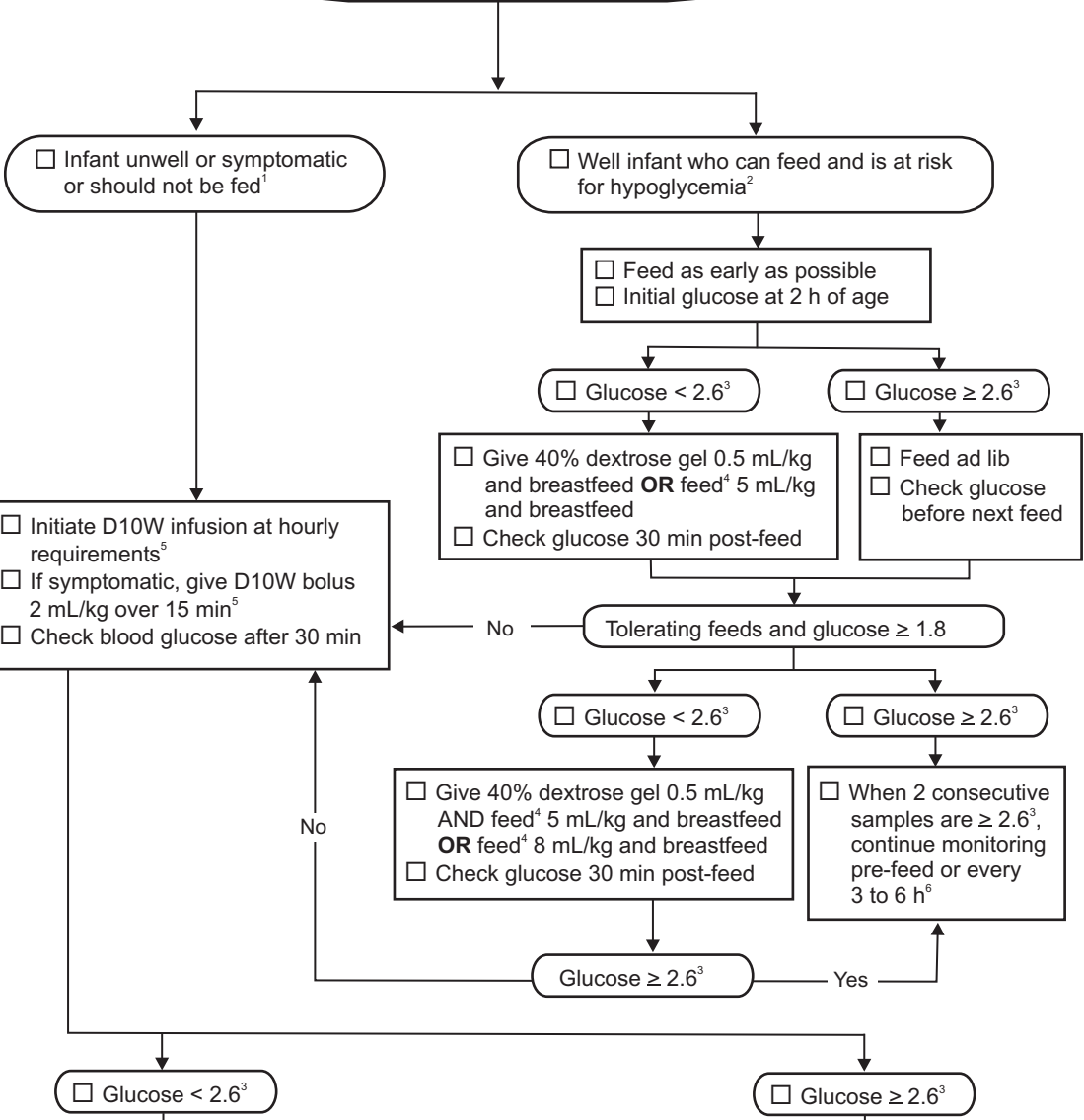


Management of hypoglycemia



Target range is 2.6 to 5.0 if infant is < 72 h old and 3.3 to 5.0 if ≥ 72 h
 Increase D10W infusion every 30 min by 1 mL/kg/h; repeat glucose every 30 min until within target range
 Calculate the lowest GIR at which blood glucose is within target range⁷
 Calculate D%W concentration needed to stay within the maximum daily fluid intake⁸
 Check electrolytes in 8 to 12 h

If GIR > 8 to 10 mg/kg/min, central access⁸ and level 3 care should be considered
 If GIR > 10 to 12 mg/kg/min, consider medication
 If GIR > 10 to 12 mg/kg/min and infant is > 72 h old, further investigation is required

Monitor glucose every 3 h
 When glucose ≥ 2.6³, introduce enteral feeds as tolerated and wean IV stepwise
 Continue pre-feed glucose monitoring until on full enteral feeds and 2 consecutive samples within normal range

1. Infants who are unwell, symptomatic, or cannot feed have their glucose checked at first encounter
2. At-risk for hypoglycemia: SGA, IUGR, LGA, IDM, GA < 37 weeks, asphyxia, maternal exposure to labetalol, late preterm antenatal steroids
3. Low glucose threshold is 3.3 after 72 h of age or with known congenital hypoglycemia disorder (e.g., hyperinsulinemia) or GIR > 10 to 12 mg/kg/min. All glucose values are in mmol/L
4. Feed (in order of preference) mother's expressed milk, donor milk or formula, and record intake
5. If delay in starting IV, give 40% dextrose gel 0.5 mL/kg
6. Duration of surveillance for well IDM or LGA: 12 h; for SGA or IUGR or well premature infants: 24 h
7. GIR calculation: GIR = dextrose concentration (in %) x infusion rate (in mL/kg/h) / 6 (Example: If D10W at 4 mL/kg/h, then GIR = 6.7 mg/kg/min)
8. Can give up to D20W by peripheral IV until central access is obtained

Abbreviations: Ca - calcium, D%W - %age dextrose in water (e.g., D10W = dextrose 10% in water), GA - gestational age, GIR - glucose infusion rate, h - hours, IDM - infants of diabetic mothers, IUGR - intrauterine growth restriction, IV - intravenous, K - potassium, LGA - large for gestational age, min - minutes, Na - sodium, SGA - small for gestational age