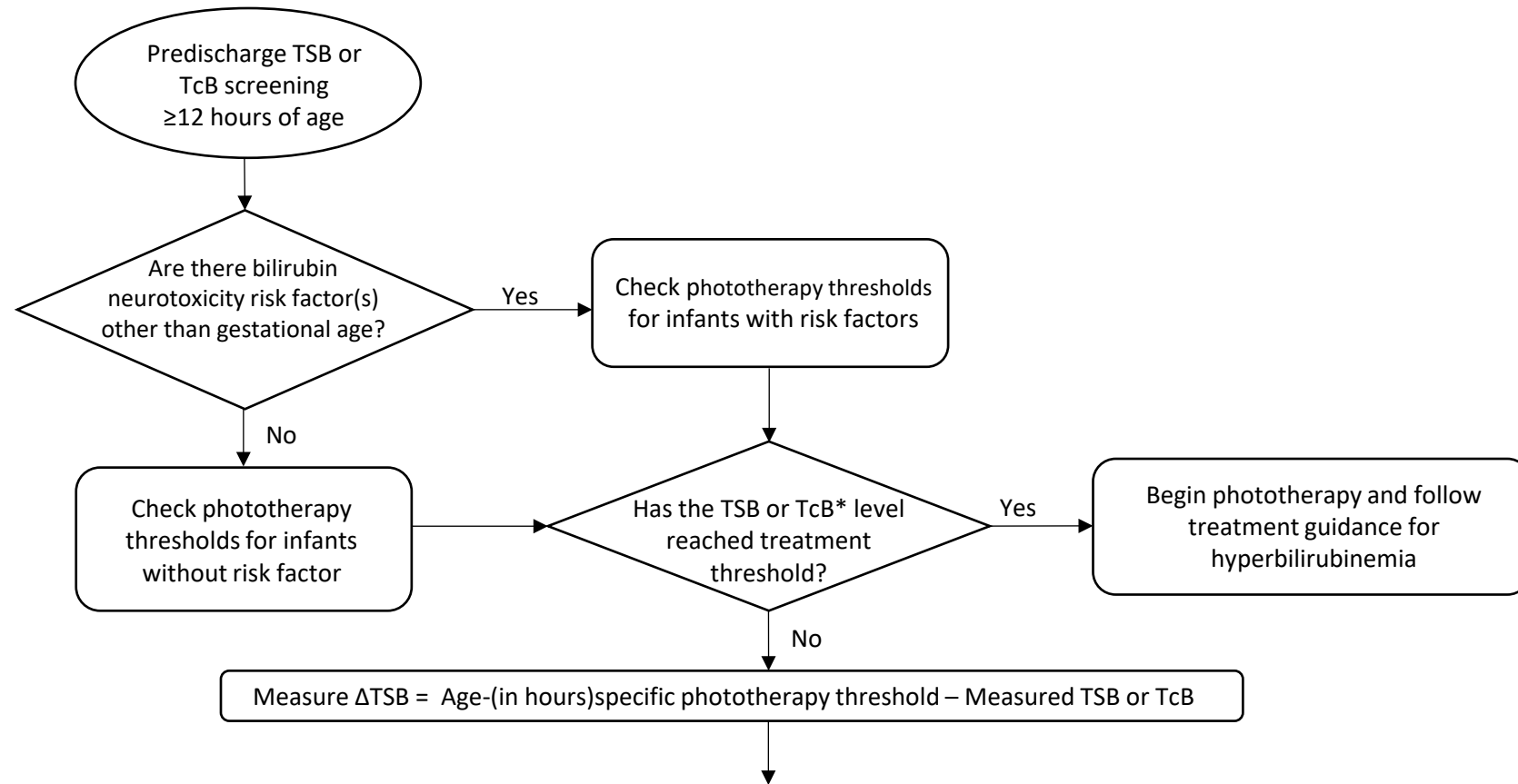


Figure 1. Algorithm for universal hyperbilirubinemia screening at 12 to 120 hours of age.



Δ TSB ($\mu\text{mol/L}$)	Age (hours)	Recommended actions
≤ 30	<24	Delay discharge and consider starting phototherapy
≤ 30	≥ 24	Delay discharge. Repeat TSB within 4 to 12 hours and consider starting phototherapy if TSB increases
31 to 60	Any age	Repeat TSB within 12 to 24 hours and reassess need for phototherapy
61 to 90	Any age	Repeat TSB within 24 to 48 hours
>90	Any age	Routine follow-up with primary health provider

*Confirm with TSB if TcB is within 50 $\mu\text{mol/L}$ of phototherapy threshold
 TcB, transcutaneous bilirubin; TSB, total serum bilirubin